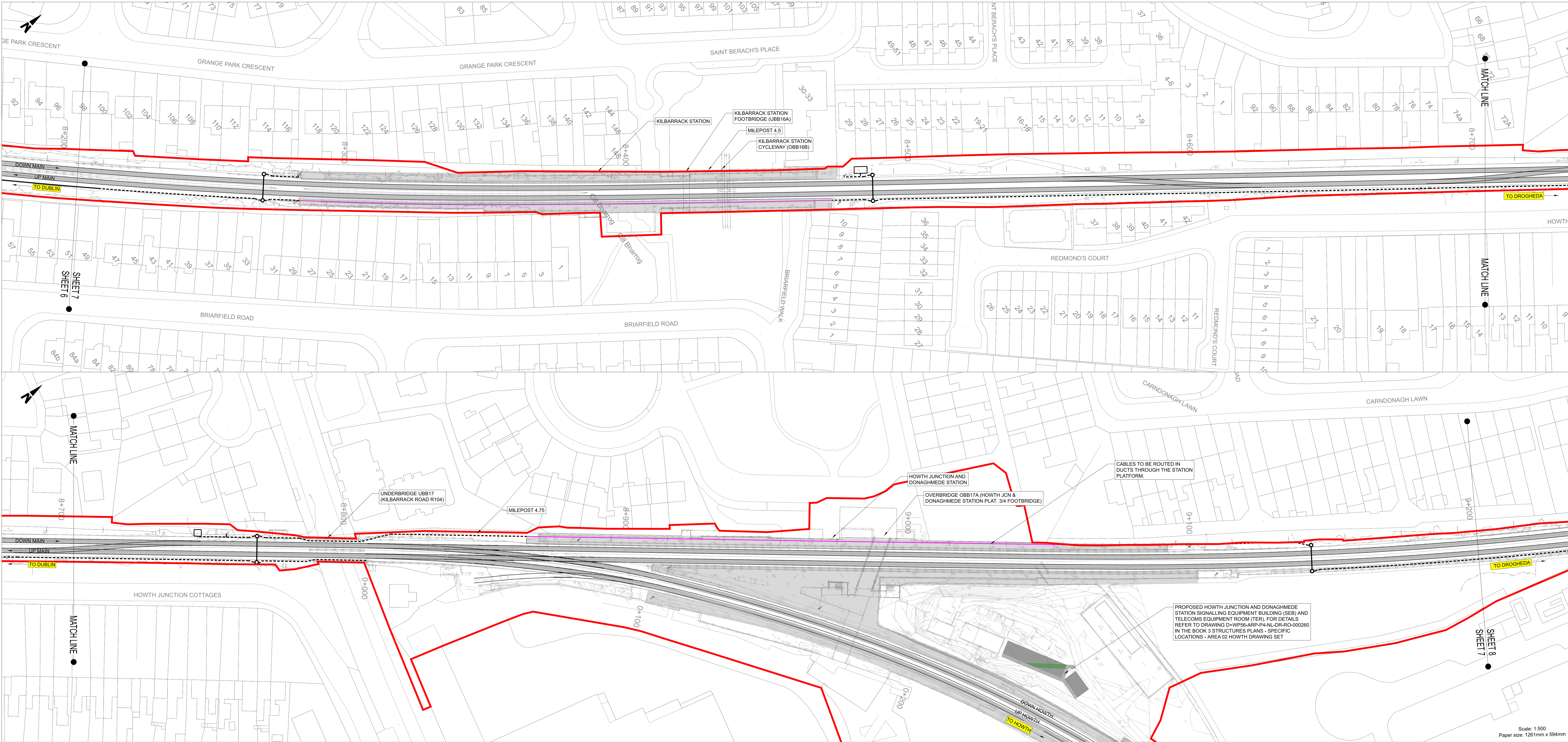


.....

LINEAR WORKS

**Zone B: Howth Junction &
Donaghmede Station to north of
Malahide Viaduct**

.....

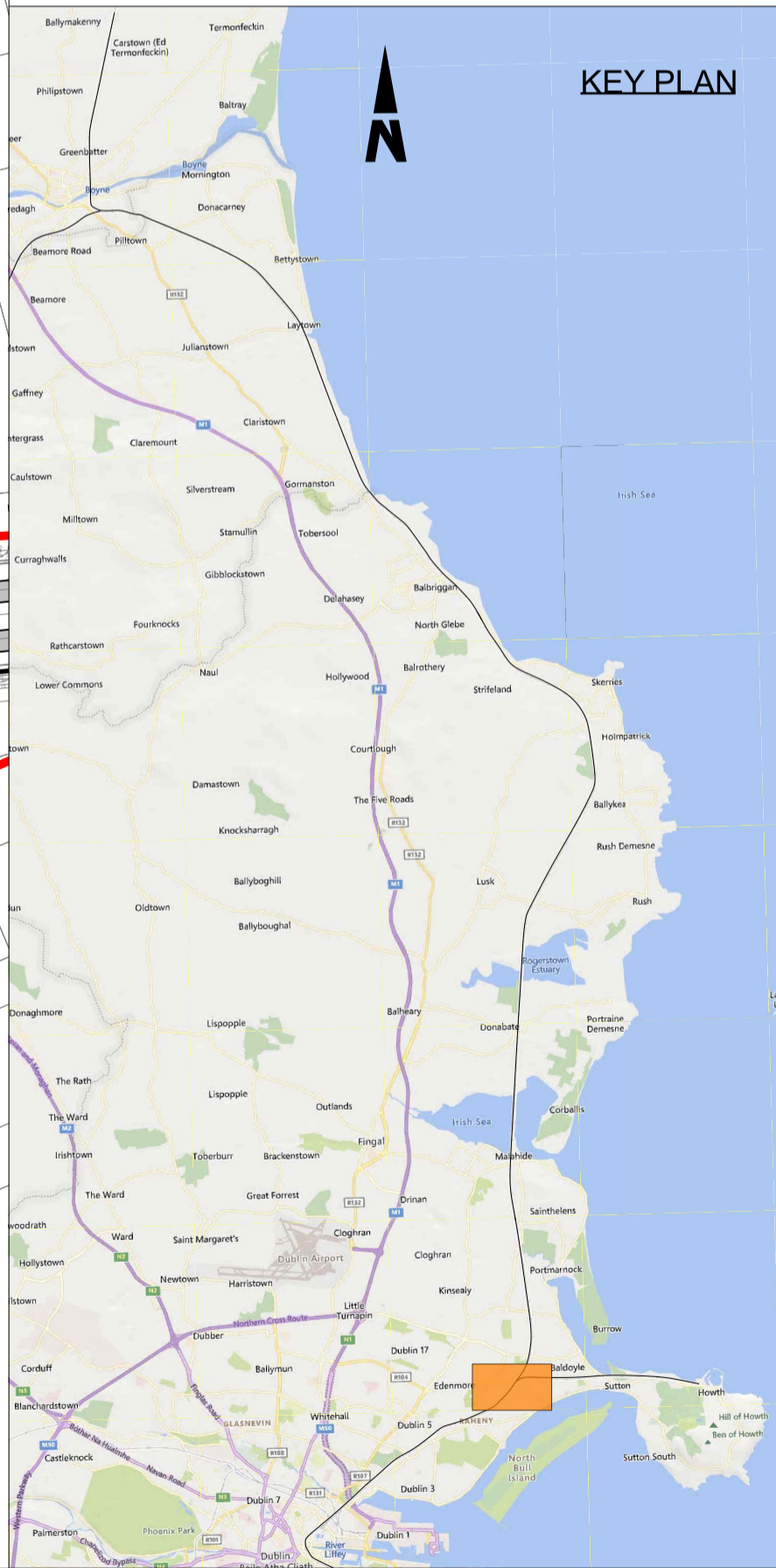


NOTES

1. DO NOT SCALE FROM THIS DRAWING.
2. THIS DRAWING SHALL BE READ IN CONJUNCTION WITH THE OTHER DRAWINGS INCLUDED IN THIS SERIES.
3. LOCATION OF ALL BURIED SERVICES TO BE CONFIRMED PRIOR TO CONSTRUCTION.
3. ALL DIMENSIONS ARE IN METERS, UNLESS OTHERWISE STATED.
4. ALL CHAINAGES ARE IN KILOMETERS.
5. DRAWING TO BE PRINTED IN COLOUR.
6. ALL LEVELS ARE IN METERS ABOVE ORDNANCE DATUM (MOD) UNLESS OTHERWISE STATED.
7. THE DART+ COASTAL NORTH PROJECT IS POSITIONED ACCORDING TO THE IRISH TRANSVERSE MERCATOR (ITM) COORDINATE SYSTEM.
8. EXISTING TROUGHING TO BE REMOVED POST CONSTRUCTION OF PROPOSED TROUGHING.
9. SELECTED INFRASTRUCTURE INTERVENTIONS DRIVING THE LINESIDE CIVILS DESIGN SUCH AS SUBSTATIONS HAVE BEEN SHOWN FOR INFORMATION ON THESE LINEAR WORKS PLANS. FOR A FULL PICTURE OF ALL INTERVENTIONS ACROSS THE PROJECT, PLEASE REFER TO THE BOOK 1 RAILWAY WORKS PLANS.
10. OHLE STRUCTURES ARE SHOWN AT INDICATIVE LOCATIONS AT A SPACING OF TYPICALLY 40m TO 50m. OHLE WIRES WILL SPAN BETWEEN THE STRUCTURES.

LEGEND

- DEVELOPMENT BOUNDARY
- EXISTING ELEMENTS
- ELEMENTS TO BE REMOVED
- PROPOSED UNDER TRACK CROSSING (UTC)
- - - PROPOSED TROUGHING
- - - PROPOSED ELEVATED TROUGHING
- - - PROPOSED FENCING
- CABLE DUCTS IN PLATFORM
- PROPOSED OVERHEAD LINE EQUIPMENT
- TRACKWORK (EXISTING AND PROPOSED)
- ▨ PLATFORM MODIFICATIONS
- ⊕ PROPOSED SIGNAL
- PROPOSED LOCATION CASE



Disclaimer

© Irish Rail (2023). This drawing is confidential and the copyright in it is owned by Irish Rail. This drawing must not be either loaned, copied or otherwise reproduced in whole or in part or used for any purpose without the prior permission of Irish Rail.

OpenStreetMap contributors

Ordnance Survey Ireland and Government of Ireland. All O.S. data used for plans are printed under Copyright Ordnance Survey Ireland 0039723 (OSi Aerial Data or OSi Lidar Data) & 2023/OSi, NMA, 180 (OSi Vector Data). All elevations are in metres and relate to OSi Geoid Model (OSGM02). Main Head is defined by existing Project Control. All Co-ordinates are in Irish Transverse Mercator Grid (ITM) as defined by OSi active GPS station Tallaght College (TLTG).

Notes

1. For continuation see drawing D+WP56-ARP-P4-NL-DR-RO-100053

Rev	Date	Dm	Chk'd	App'd	Description
P01	12/04/2024	AC	EJ	DB	PLANNING ISSUE

larnród Éireann
Irish Rail

ARUP

Date	Scale	Drawn	Checked	Approved
01/06/2023	As shown	AC	EJ	DB

Project Code	Originator Code	OMS Code	280275-00
D+WP56	ARP		

Project Title

DART+ COASTAL NORTH

Linear Works

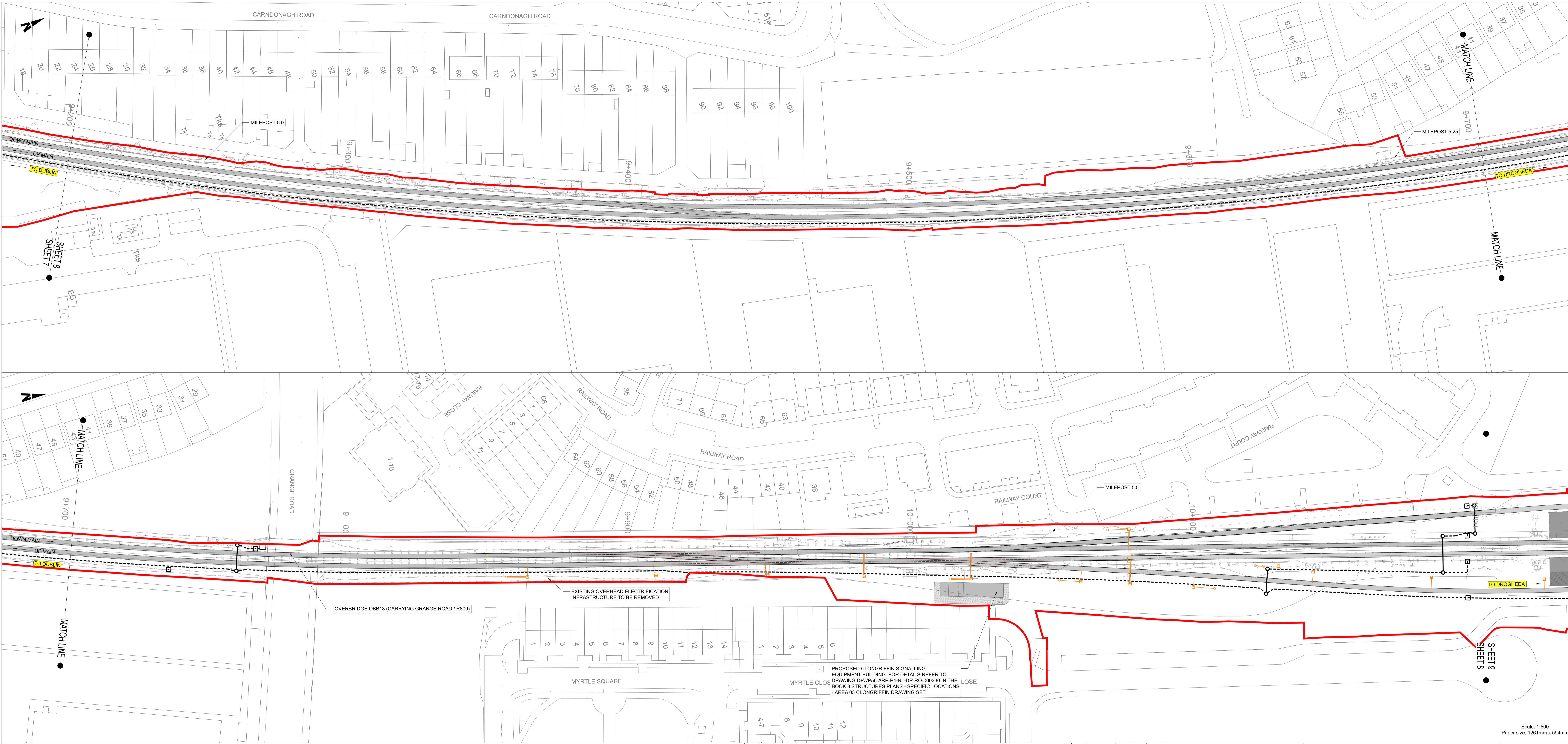
Drawing Title

Drawing File Name: D+WP56-ARP-P4-NL-DR-RO-100007

Sheet Number	Status	Rev
7 of 58	S3	P01

Scale: 1:500
Paper size: 1261mm x 594mm

DO NOT SCALE USE FIGURED DIMENSIONS ONLY

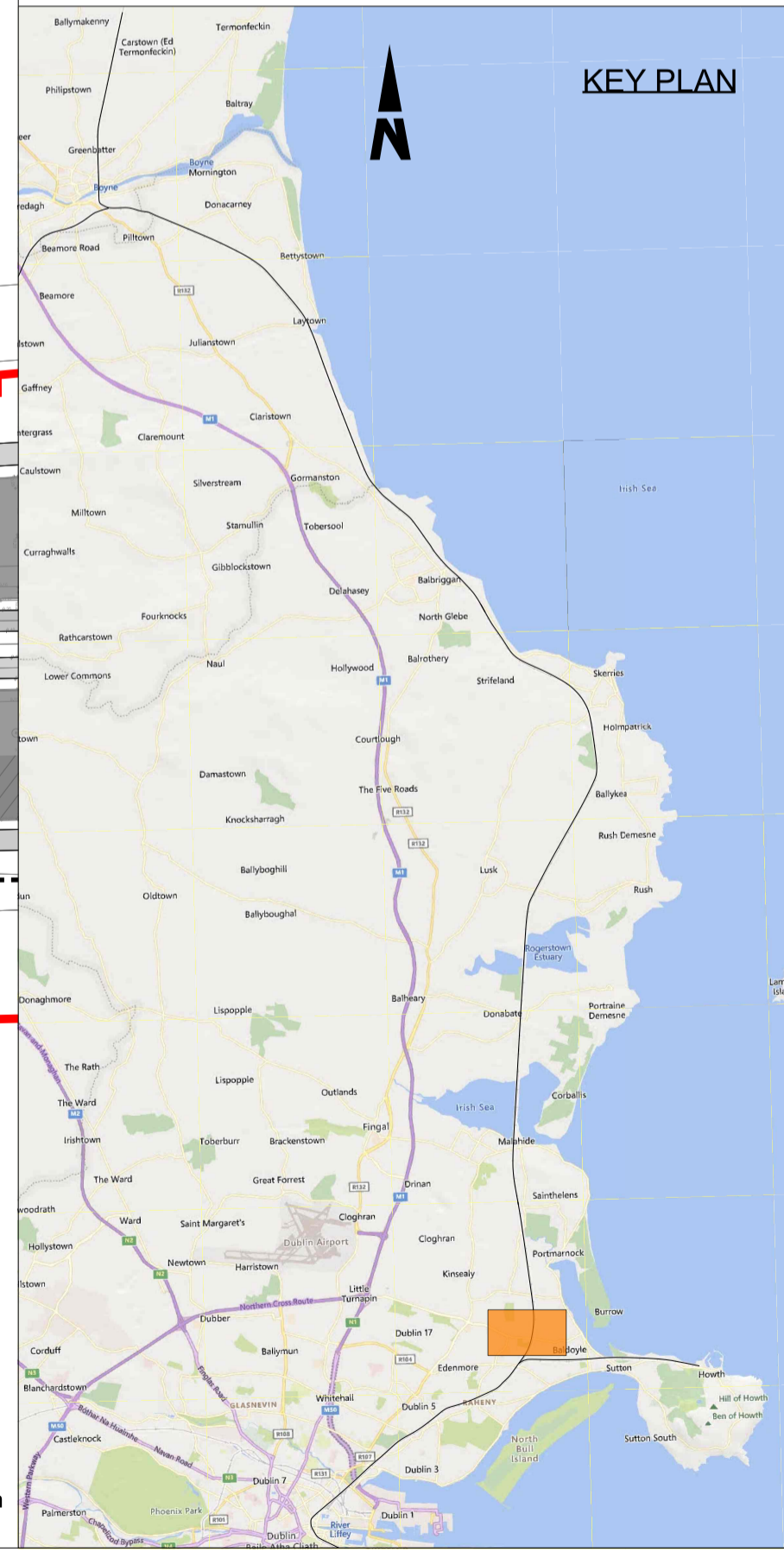


NOTES

1. DO NOT SCALE FROM THIS DRAWING.
2. THIS DRAWING SHALL BE READ IN CONJUNCTION WITH THE OTHER DRAWINGS INCLUDED IN THIS SERIES.
3. LOCATION OF ALL BURIED SERVICES TO BE CONFIRMED PRIOR TO CONSTRUCTION.
3. ALL DIMENSIONS ARE IN METERS, UNLESS OTHERWISE STATED.
4. ALL CHAINAGES ARE IN KILOMETERS.
5. DRAWING TO BE PRINTED IN COLOUR.
6. ALL LEVELS ARE IN METERS ABOVE ORDNANCE DATUM (MOD) UNLESS OTHERWISE STATED.
7. THE DART+ COASTAL NORTH PROJECT IS POSITIONED ACCORDING TO THE IRISH TRANSVERSE MERCATOR (ITM) COORDINATE SYSTEM.
8. EXISTING TROUGHING TO BE REMOVED POST CONSTRUCTION OF PROPOSED TROUGHING.
9. SELECTED INFRASTRUCTURE INTERVENTIONS DRIVING THE LINESIDE CIVILS DESIGN SUCH AS SUBSTATIONS HAVE BEEN SHOWN FOR INFORMATION ON THESE LINEAR WORKS PLANS. FOR A FULL PICTURE OF ALL INTERVENTIONS ACROSS THE PROJECT, PLEASE REFER TO THE BOOK 1 RAILWAY WORKS PLANS.
10. OHLE STRUCTURES ARE SHOWN AT INDICATIVE LOCATIONS AT A SPACING OF TYPICALLY 40m TO 50m. OHLE WIRES WILL SPAN BETWEEN THE STRUCTURES.

LEGEND

- DEVELOPMENT BOUNDARY
- EXISTING ELEMENTS
- ELEMENTS TO BE REMOVED
- PROPOSED UNDER TRACK CROSSING (UTX)
- - - PROPOSED TROUGHING
- - - PROPOSED ELEVATED TROUGHING
- - - PROPOSED FENCING
- CABLE DUCTS IN PLATFORM
- PROPOSED OVERHEAD LINE EQUIPMENT
- TRACKWORK (EXISTING AND PROPOSED)
- ▨ PLATFORM MODIFICATIONS
- ⊕ PROPOSED SIGNAL
- PROPOSED LOCATION CASE



Scale: 1:500
Paper size: 1261mm x 594mm

Disclaimer

© Irish Rail (2023). This drawing is confidential and the copyright in it is owned by Irish Rail. This drawing must not be either loaned, copied or otherwise reproduced in whole or in part or used for any purpose without the prior permission of Irish Rail.

© OpenStreetMap contributors

© Ordnance Survey Ireland and Government of Ireland. All O.S. data used for plans are printed under Copyright Ordnance Survey Ireland 0039723 (OSi Aerial Data or OSi Lidar Data) & 2023 (OSi, NMA, 180 (OSi Vector Data)). All elevations are in metres and relate to OSi Geoid Height (OSGM02). Main Head is defined by existing Project Control. All Co-ordinates are in Irish Transverse Mercator Grid (ITM) as defined by OSi active GPS station Tallaght College (TLTG).



Rev	Date	Dm	Chk'd	App'd	Description
P01	12/04/2024	AC	EJ	DB	PLANNING ISSUE

Client

Iarnród Éireann
Irish Rail

Date: 01/06/2023
Project Code: D+WP56

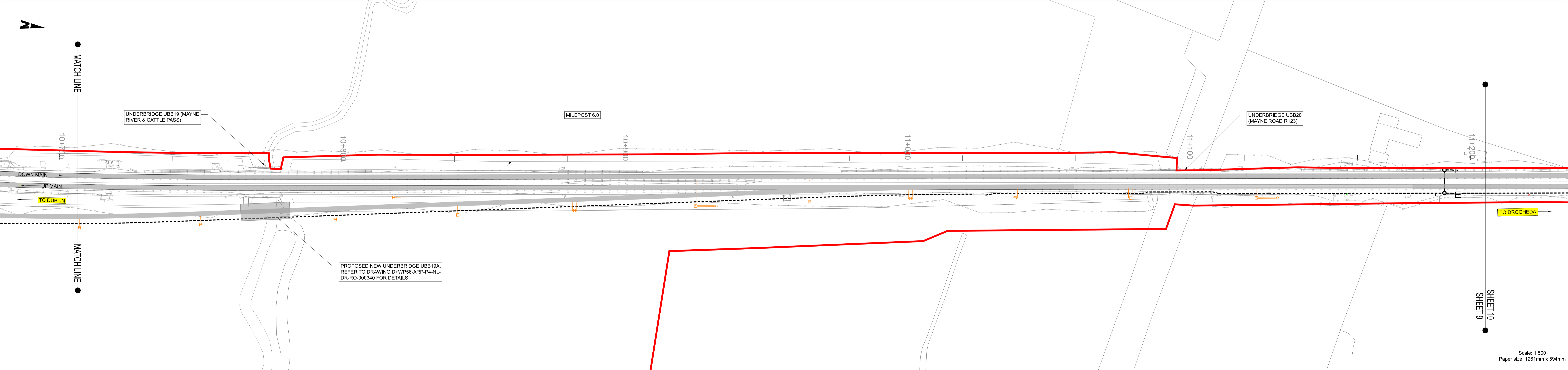
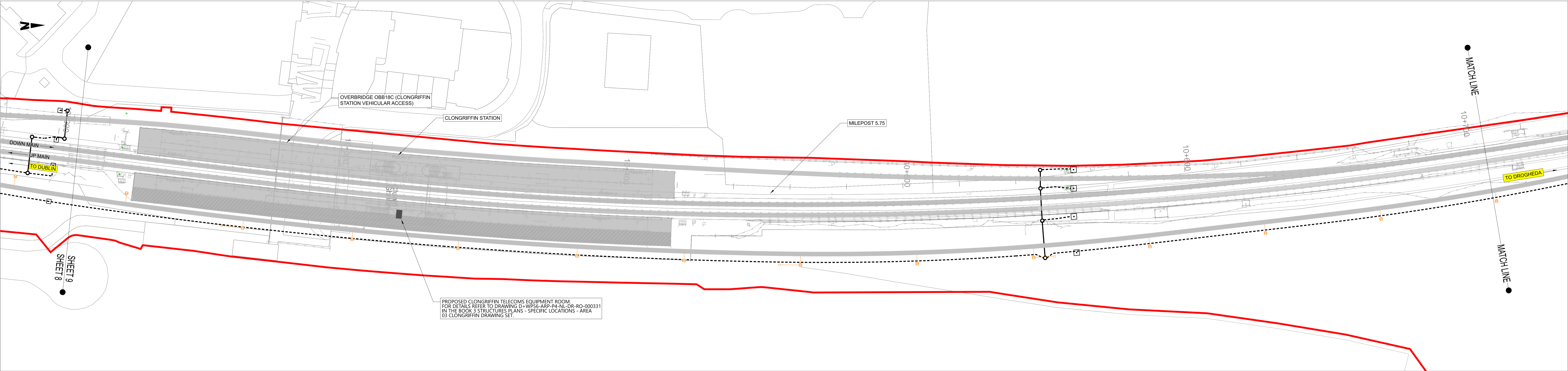
Engineering Designer

ARUP

Drawn: AC
Checked: EJ
Approved: DB

Project Title				
DART+ COASTAL NORTH				
Linear Works				
Drawing Title				
Drawing File Name				
D+WP56-ARP-P4-NL-DR-RO-100008				
Sheet Number	Status	Rev		
8 of 58	S3	P01		

DO NOT SCALE USE FIGURED DIMENSIONS ONLY

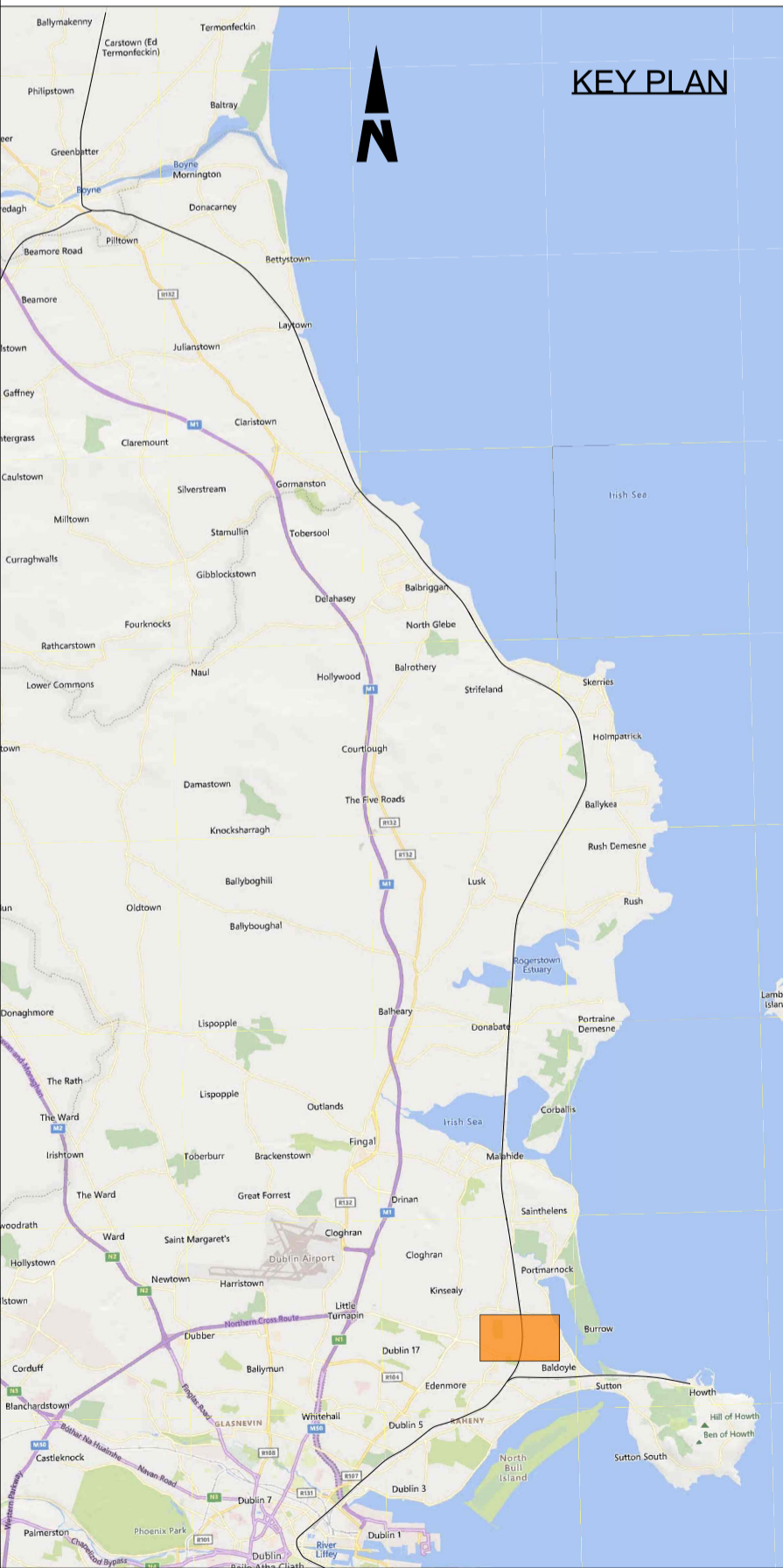


NOTES

1. DO NOT SCALE FROM THIS DRAWING.
2. THIS DRAWING SHALL BE READ IN CONJUNCTION WITH THE OTHER DRAWINGS INCLUDED IN THIS SERIES.
3. LOCATION OF ALL BURIED SERVICES TO BE CONFIRMED PRIOR TO CONSTRUCTION.
3. ALL DIMENSIONS ARE IN METERS, UNLESS OTHERWISE STATED.
4. ALL CHAINAGES ARE IN KILOMETERS.
5. DRAWING TO BE PRINTED IN COLOUR.
6. ALL LEVELS ARE IN METERS ABOVE ORDNANCE DATUM (MOD) UNLESS OTHERWISE STATED.
7. THE DART+ COASTAL NORTH PROJECT IS POSITIONED ACCORDING TO THE IRISH TRANSVERSE MERCATOR (ITM) COORDINATE SYSTEM.
8. EXISTING TROUGHING TO BE REMOVED POST CONSTRUCTION OF PROPOSED TROUGHING.
9. SELECTED INFRASTRUCTURE INTERVENTIONS DRIVING THE LINESIDE CIVILS DESIGN SUCH AS SUBSTATIONS HAVE BEEN SHOWN FOR INFORMATION ON THESE LINEAR WORKS PLANS. FOR A FULL PICTURE OF ALL INTERVENTIONS ACROSS THE PROJECT, PLEASE REFER TO THE BOOK 1 RAILWAY WORKS PLANS.
10. OHLE STRUCTURES ARE SHOWN AT INDICATIVE LOCATIONS AT A SPACING OF TYPICALLY 40m TO 50m. OHLE WIRES WILL SPAN BETWEEN THE STRUCTURES.

LEGEND

- DEVELOPMENT BOUNDARY
- EXISTING ELEMENTS
- ELEMENTS TO BE REMOVED
- PROPOSED UNDER TRACK CROSSING (UTX)
- - - PROPOSED TROUGHING
- - - PROPOSED ELEVATED TROUGHING
- - - PROPOSED FENCING
- CABLE DUCTS IN PLATFORM
- PROPOSED OVERHEAD LINE EQUIPMENT
- TRACKWORK (EXISTING AND PROPOSED)
- ▨ PLATFORM MODIFICATIONS
- ⊕ PROPOSED SIGNAL
- PROPOSED LOCATION CASE



Scale: 1:500
Paper size: 1261mm x 594mm

Disclaimer
© Irish Rail (2023). This drawing is confidential and the copyright in it is owned by Irish Rail. This drawing must not be either loaned, copied or otherwise reproduced in whole or in part or used for any purpose without the prior permission of Irish Rail.
© OpenStreetMap contributors
© Ordnance Survey Ireland and Government of Ireland. All O.S. data used for plans are printed under Copyright Ordnance Survey Ireland 0039723 (OSi Aerial Data or OSi LIDAR Data) & 2023 OSi, NMA, 180 (OSi Vector Data). All elevations are in metres and relate to OSi Geoid Model (OSGM02). Mean Height is defined by existing Project Control. All Co-ordinates are in Irish Transverse Mercator Grid (ITM) as defined by OSi active GPS station Tallaght College (TLTG).

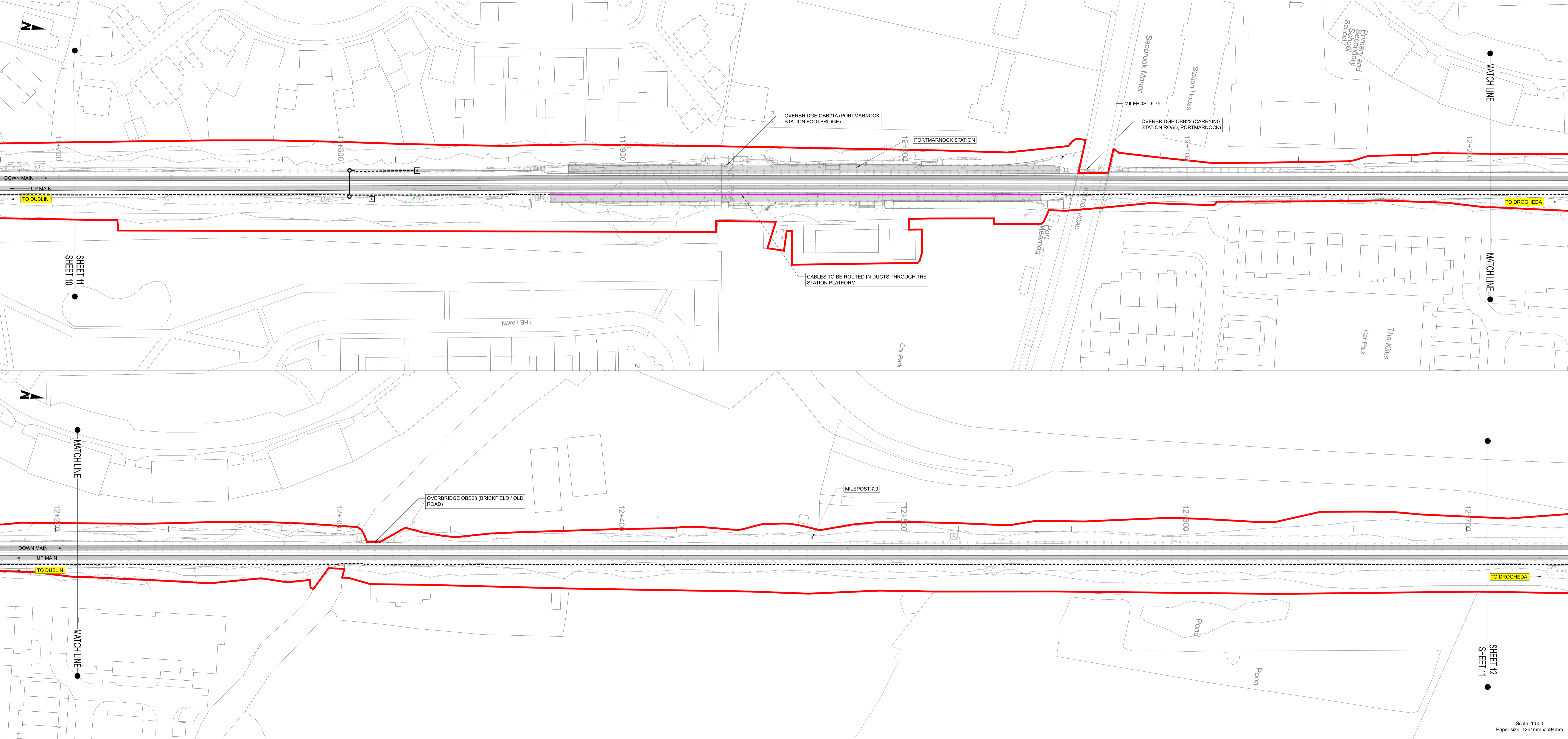


Rev	Date	Dm	Chk'd	App'd	Description
P01	12/04/2024	AC	EJ	DB	PLANNING ISSUE

Client 		Engineering Designer 			
Date	01/06/2023	Scale	As shown	Drawn	AC
Project Code	D+WP56	Originator Code	ARP	Checked	EJ
		OMS Code	280275-00	Approved	DB

Project Title DART+ COASTAL NORTH			
Drawing Title LINEAR WORKS			
Drawing File Name	D+WP56-ARP-P4-NL-DR-RO-100009	Sheet Number	9 of 58
Status	S3	Rev	P01

DO NOT SCALE USE FIGURED DIMENSIONS ONLY

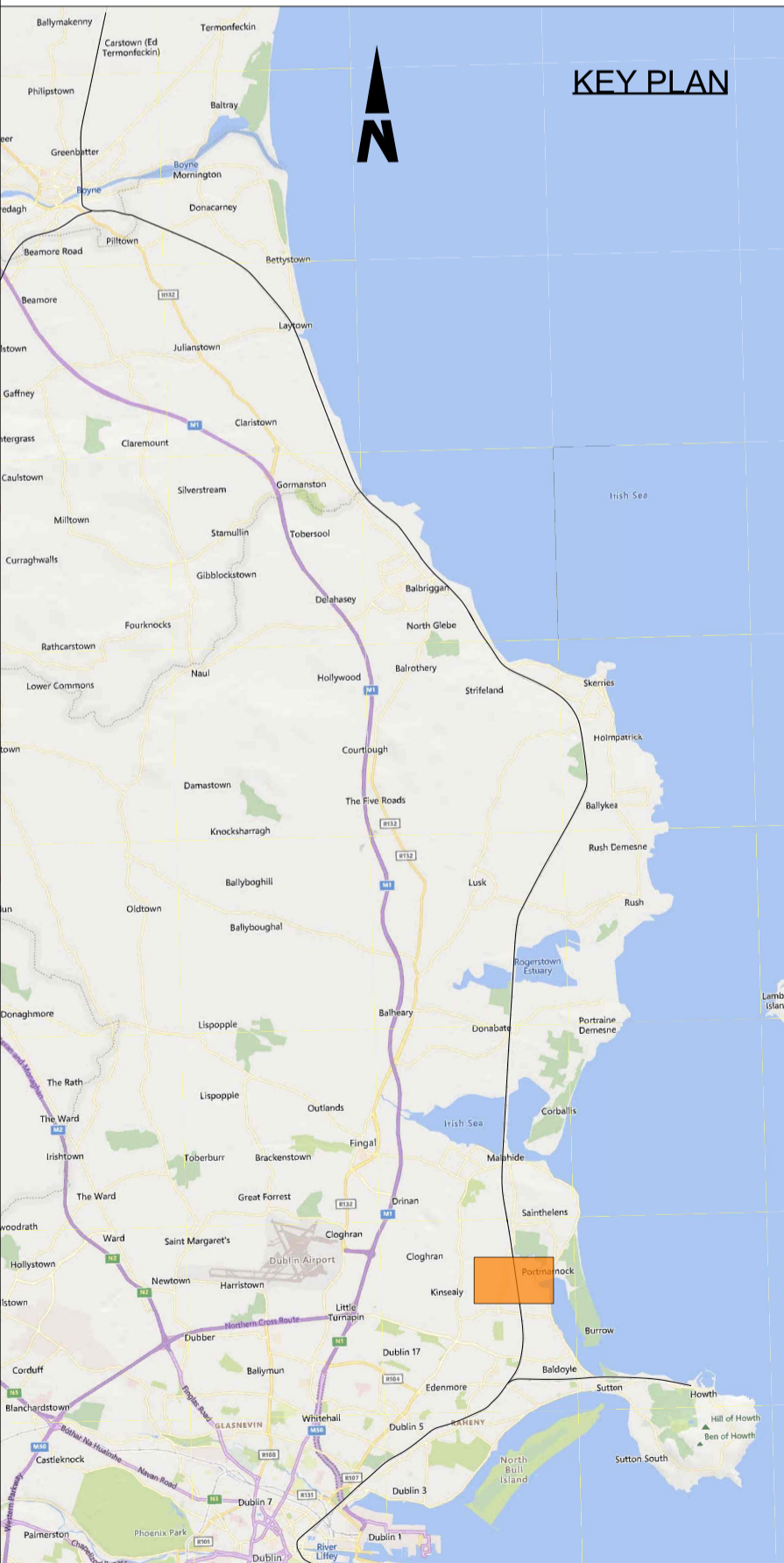


NOTES

1. DO NOT SCALE FROM THIS DRAWING.
2. THIS DRAWING SHALL BE READ IN CONJUNCTION WITH THE OTHER DRAWINGS INCLUDED IN THIS SERIES.
3. LOCATION OF ALL BURIED SERVICES TO BE CONFIRMED PRIOR TO CONSTRUCTION.
3. ALL DIMENSIONS ARE IN METERS, UNLESS OTHERWISE STATED.
4. ALL CHAINAGES ARE IN KILOMETERS.
5. DRAWING TO BE PRINTED IN COLOUR.
6. ALL LEVELS ARE IN METERS ABOVE ORDNANCE DATUM (MOD) UNLESS OTHERWISE STATED.
7. THE DART+ COASTAL NORTH PROJECT IS POSITIONED ACCORDING TO THE IRISH TRANSVERSE MERCATOR (ITM) COORDINATE SYSTEM.
8. EXISTING TROUGHING TO BE REMOVED POST CONSTRUCTION OF PROPOSED TROUGHING.
9. SELECTED INFRASTRUCTURE INTERVENTIONS DRIVING THE LINESIDE CIVILS DESIGN SUCH AS SUBSTATIONS HAVE BEEN SHOWN FOR INFORMATION ON THESE LINEAR WORKS PLANS. FOR A FULL PICTURE OF ALL INTERVENTIONS ACROSS THE PROJECT, PLEASE REFER TO THE BOOK 1 RAILWAY WORKS PLANS.
10. OHLE STRUCTURES ARE SHOWN AT INDICATIVE LOCATIONS AT A SPACING OF TYPICALLY 40m TO 50m. OHLE WIRES WILL SPAN BETWEEN THE STRUCTURES.

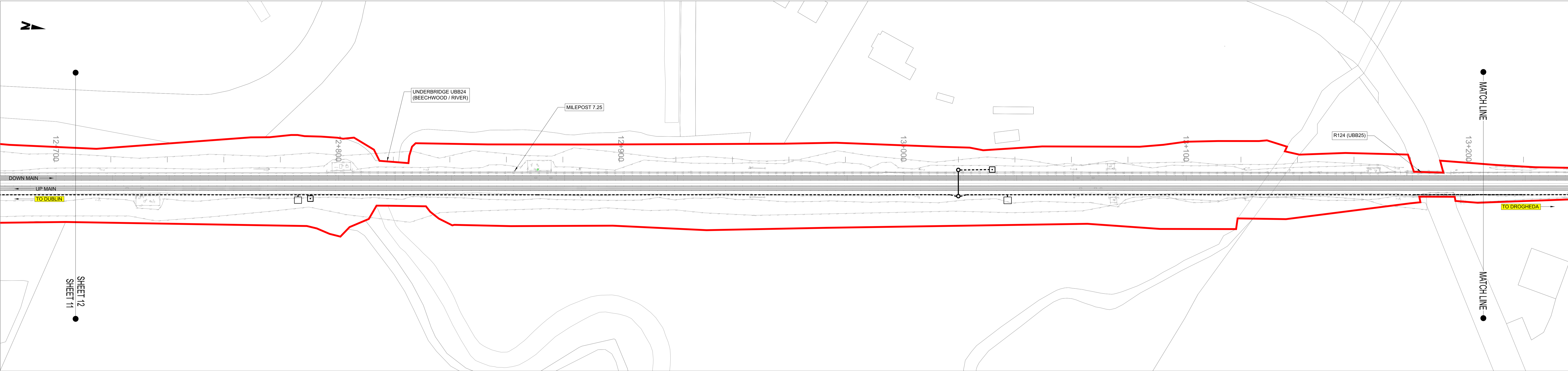
LEGEND

- DEVELOPMENT BOUNDARY
- EXISTING ELEMENTS
- ELEMENTS TO BE REMOVED
- PROPOSED UNDER TRACK CROSSING (UTX)
- - - - PROPOSED TROUGHING
- - - - PROPOSED ELEVATED TROUGHING
- - - - PROPOSED FENCING
- CABLE DUCTS IN PLATFORM
- PROPOSED OVERHEAD LINE EQUIPMENT
- TRACKWORK (EXISTING AND PROPOSED)
- ▨ PLATFORM MODIFICATIONS
- ⊕ PROPOSED SIGNAL
- PROPOSED LOCATION CASE



Scale: 1:500
Paper size: 1261mm x 594mm

<div>Disclaimer</div> <div><div><div>© Irish Rail (2023). This drawing is confidential and the copyright in it is owned by Irish Rail. This drawing must not be either loaned, copied or otherwise reproduced in whole or in part or used for any purpose without the prior permission of Irish Rail.</div><div>© OpenStreetMap contributors</div><div>© Ordnance Survey Ireland and Government of Ireland. All O.S. data used for plans are printed under Copyright Ordnance Survey Ireland 0039723 (OSi Aerial Data or OSi Lidar Data) & 2023/OSi, NMA, 180 (OSi Vector Data). All elevations are in metres and relate to OSi Geoid Model (OSGM02). Main Head is defined by existing Project Control. All Co-ordinates are in Irish Transverse Mercator Grid (ITM) as defined by OSi active GPS station Tallaght College (TLTG).</div></div></div> <div><div><div><div><div></div><div>DART+ Coastal North</div></div><div><div>NTA</div><div>National Transport Authority</div></div><div><div>Tionacdal Éireann</div><div>Transport Ireland</div><div>2040</div></div></div></div></div> <div><table><tr><th>Rev</th><th>Date</th><th>Dm</th><th>Chk'd</th><th>App'd</th><th>Description</th></tr><tr><td>P01</td><td>12/04/2024</td><td>AC</td><td>EJ</td><td>DB</td><td>PLANNING ISSUE</td></tr><tr><td> </td><td> </td><td> </td><td> </td><td> </td><td> </td></tr><tr><td> </td><td> </td><td> </td><td> </td><td> </td><td> </td></tr><tr><td> </td><td> </td><td> </td><td> </td><td> </td><td> </td></tr></table></div>										Rev	Date	Dm	Chk'd	App'd	Description	P01	12/04/2024	AC	EJ	DB	PLANNING ISSUE																			<div><div><div><div></div><div>Iarnród Éireann</div><div>Irish Rail</div></div><div><div>Date</div><div>01/06/2023</div></div><div><div>Project Code</div><div>D+WP56</div></div></div><div><div><div>Scale</div><div>As shown</div></div><div><div>Originator Code</div><div>ARP</div></div></div></div> <div><div><div>Drawn</div><div>AC</div></div><div><div>Checked</div><div>EJ</div></div><div><div>OMS Code</div><div>280275-00</div></div><div><div>Approved</div><div>DB</div></div></div>	<div>Engineering Designer</div> <div><div>ARUP</div></div>	<div><div>Project Title</div><div>DART+ COASTAL NORTH</div></div> <div><div>Drawing Title</div><div>LINEAR WORKS</div></div> <div><div>Drawing File Name</div><div>D+WP56-ARP-P4-NL-DR-RO-100011</div></div> <div><div>Sheet Number</div><div>11 of 58</div></div> <div><div>Status</div><div>S3</div></div> <div><div>Rev</div><div>P01</div></div>
Rev	Date	Dm	Chk'd	App'd	Description																																					
P01	12/04/2024	AC	EJ	DB	PLANNING ISSUE																																					

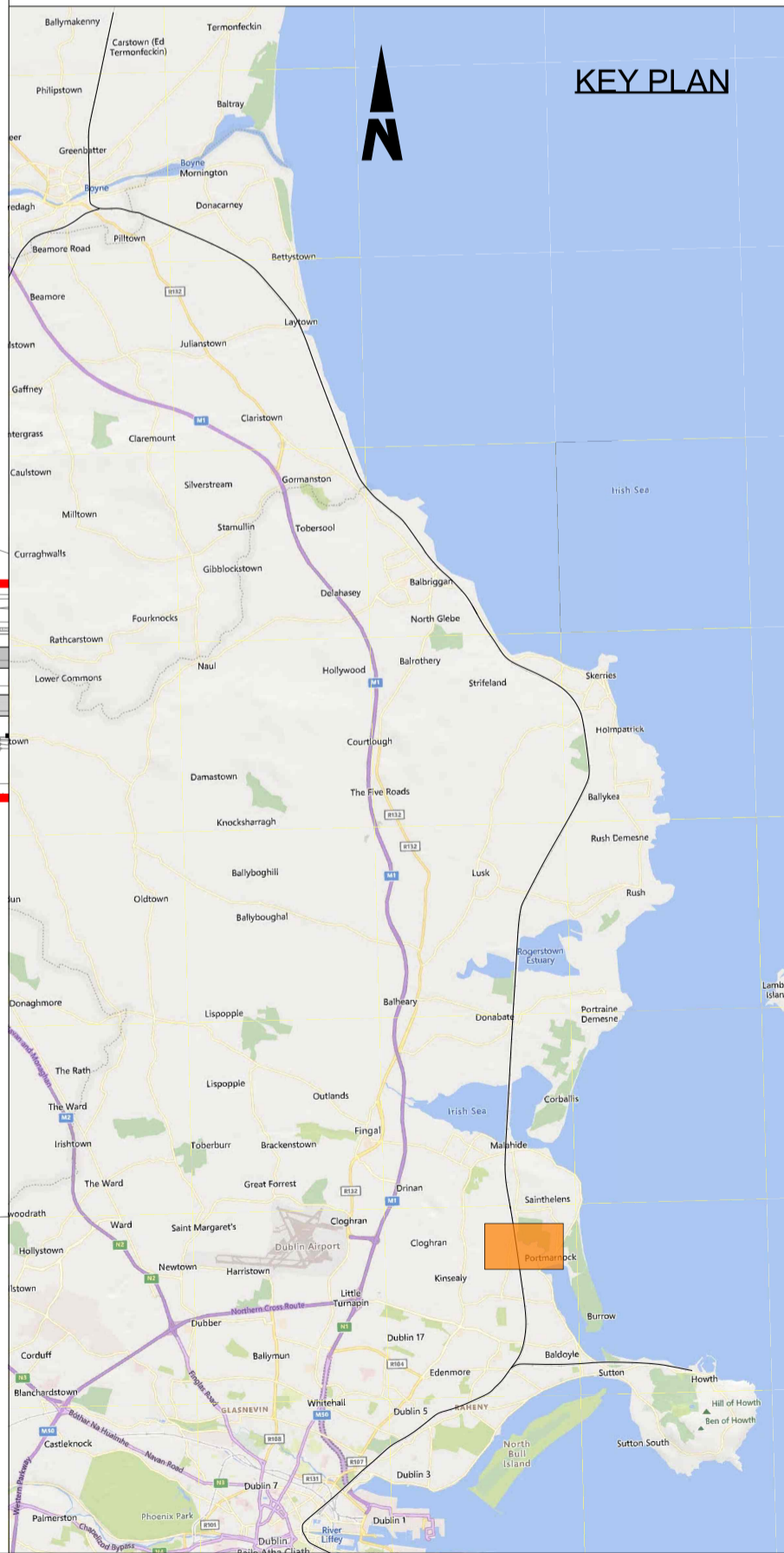


NOTES

1. DO NOT SCALE FROM THIS DRAWING.
2. THIS DRAWING SHALL BE READ IN CONJUNCTION WITH THE OTHER DRAWINGS INCLUDED IN THIS SERIES.
3. LOCATION OF ALL BURIED SERVICES TO BE CONFIRMED PRIOR TO CONSTRUCTION.
3. ALL DIMENSIONS ARE IN METERS, UNLESS OTHERWISE STATED.
4. ALL CHAINAGES ARE IN KILOMETERS.
5. DRAWING TO BE PRINTED IN COLOUR.
6. ALL LEVELS ARE IN METERS ABOVE ORDNANCE DATUM (MOD) UNLESS OTHERWISE STATED.
7. THE DART+ COASTAL NORTH PROJECT IS POSITIONED ACCORDING TO THE IRISH TRANSVERSE MERCATOR (ITM) COORDINATE SYSTEM.
8. EXISTING TROUGHING TO BE REMOVED POST CONSTRUCTION OF PROPOSED TROUGHING.
9. SELECTED INFRASTRUCTURE INTERVENTIONS DRIVING THE LINESIDE CIVILS DESIGN SUCH AS SUBSTATIONS HAVE BEEN SHOWN FOR INFORMATION ON THESE LINEAR WORKS PLANS. FOR A FULL PICTURE OF ALL INTERVENTIONS ACROSS THE PROJECT, PLEASE REFER TO THE BOOK 1 RAILWAY WORKS PLANS.
10. OHLE STRUCTURES ARE SHOWN AT INDICATIVE LOCATIONS AT A SPACING OF TYPICALLY 40m TO 50m. OHLE WIRES WILL SPAN BETWEEN THE STRUCTURES.

LEGEND

- DEVELOPMENT BOUNDARY
- EXISTING ELEMENTS
- ELEMENTS TO BE REMOVED
- PROPOSED UNDER TRACK CROSSING (UTX)
- - - PROPOSED TROUGHING
- - - PROPOSED ELEVATED TROUGHING
- - - PROPOSED FENCING
- CABLE DUCTS IN PLATFORM
- PROPOSED OVERHEAD LINE EQUIPMENT
- TRACKWORK (EXISTING AND PROPOSED)
- ▨ PLATFORM MODIFICATIONS
- ⊕ PROPOSED SIGNAL
- PROPOSED LOCATION CASE



Disclaimer
© Irish Rail (2023). This drawing is confidential and the copyright in it is owned by Irish Rail. This drawing must not be either loaned, copied or otherwise reproduced in whole or in part or used for any purpose without the prior permission of Irish Rail.
© OpenStreetMap contributors
© Ordnance Survey Ireland and Government of Ireland. All O.S. data used for plans are printed under Copyright Ordnance Survey Ireland 0039723 (OSi Aerial Data or OSi Lidar Data) & 2023 OSi, NMA, 180 (OSi Vector Data). All elevations are in metres and relate to OSi Geoid Model (OSGM02). Mean Height is defined by existing Project Control. All Co-ordinates are in Irish Transverse Mercator Grid (ITM) as defined by OSi active GPS station Tallaght College (TLTG).

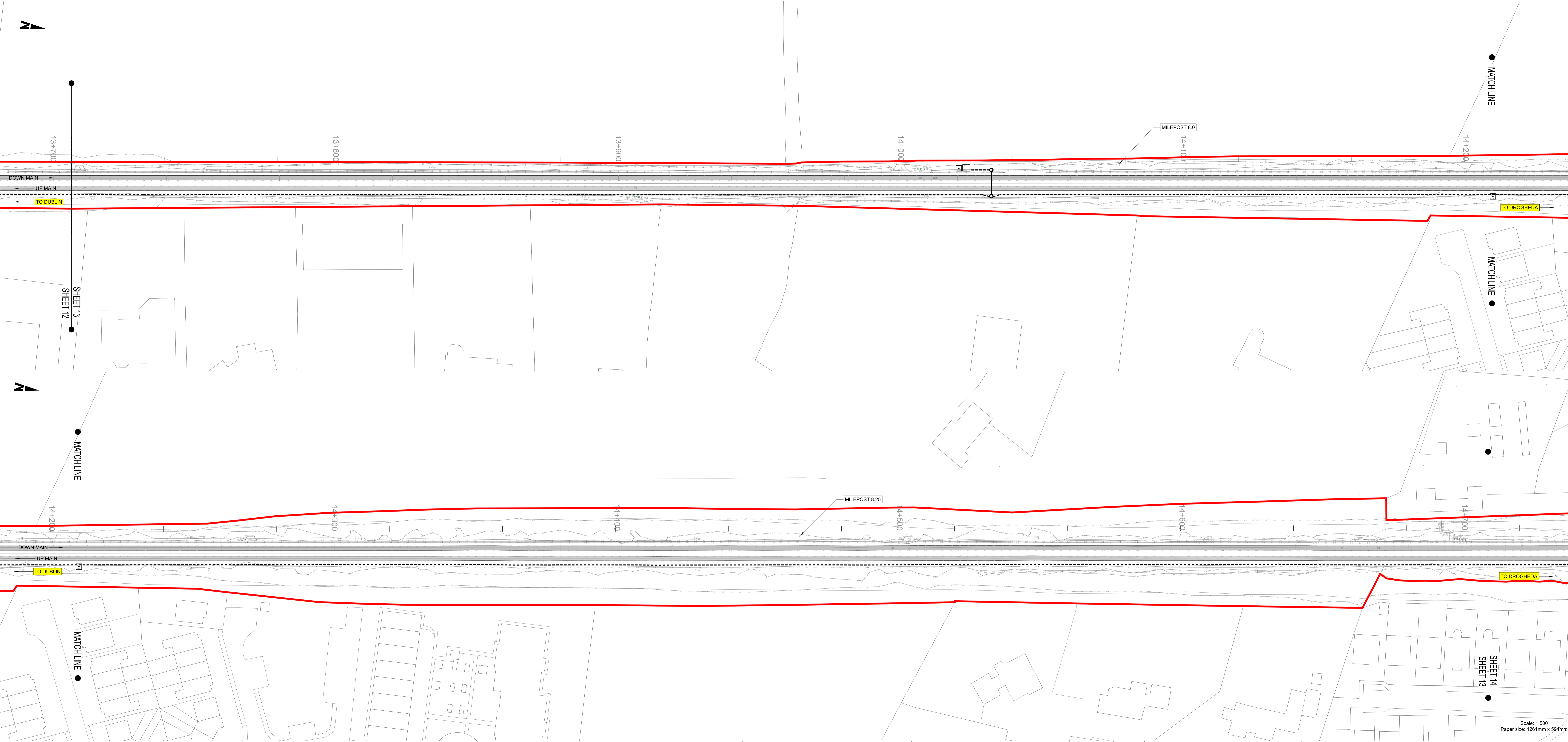


Rev	Date	Dm	Chk'd	App'd	Description
P01	12/04/2024	AC	EJ	DB	PLANNING ISSUE

Client 		Engineering Designer 			
Date	01/06/2023	Scale	As shown	Drawn	AC
Project Code	D+WP56	Originator Code	ARP	Checked	EJ
		OMS Code	280275-00	Approved	DB

Project Title DART+ COASTAL NORTH			
Drawing Title LINEAR WORKS			
Drawing File Name	D+WP56-ARP-P4-NL-DR-RO-100012	Sheet Number	12 of 58
Status	S3	Rev	P01

DO NOT SCALE USE FIGURED DIMENSIONS ONLY

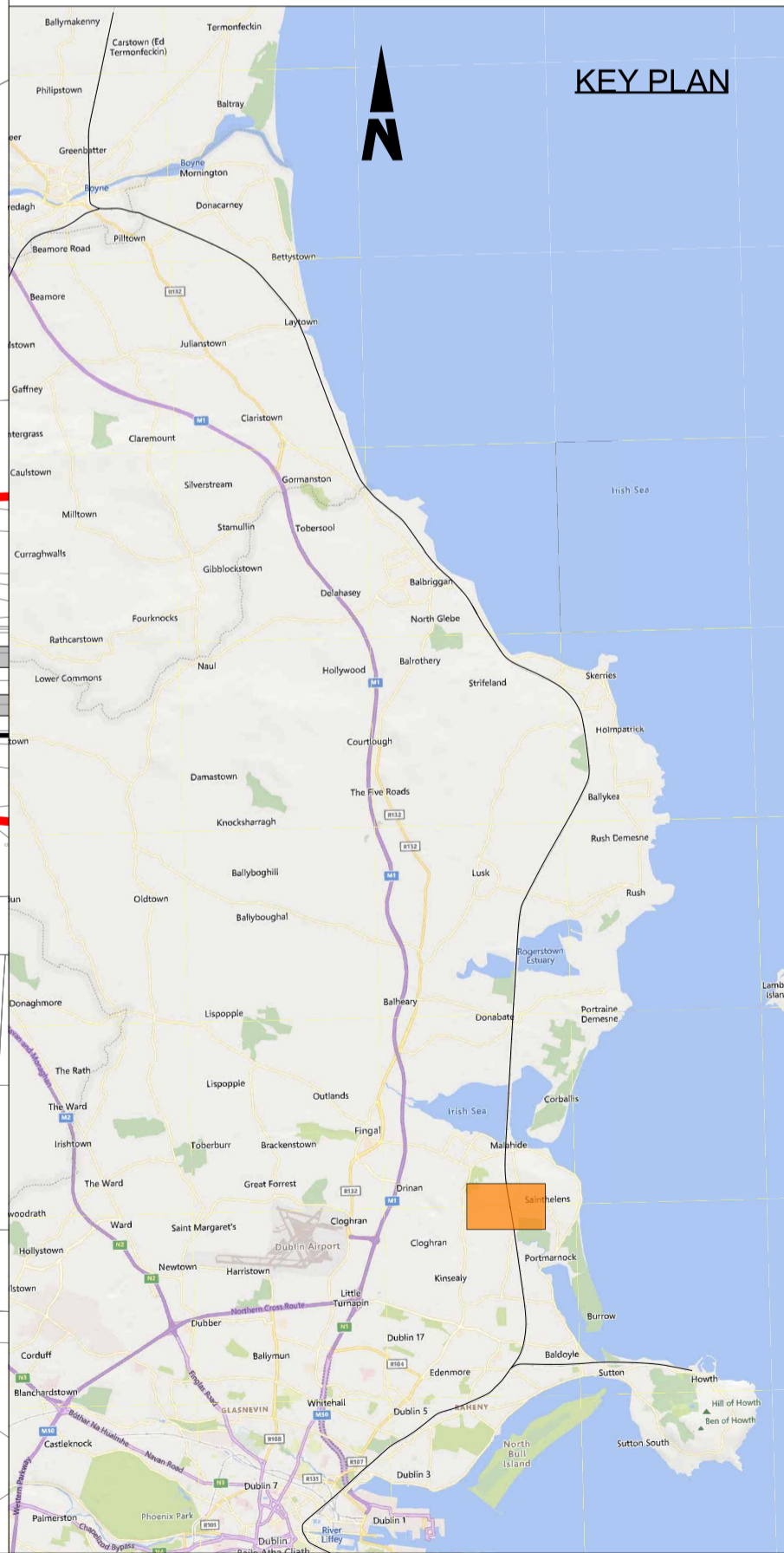


NOTES

1. DO NOT SCALE FROM THIS DRAWING.
2. THIS DRAWING SHALL BE READ IN CONJUNCTION WITH THE OTHER DRAWINGS INCLUDED IN THIS SERIES.
3. LOCATION OF ALL BURIED SERVICES TO BE CONFIRMED PRIOR TO CONSTRUCTION.
3. ALL DIMENSIONS ARE IN METERS, UNLESS OTHERWISE STATED.
4. ALL CHAINAGES ARE IN KILOMETERS.
5. DRAWING TO BE PRINTED IN COLOUR.
6. ALL LEVELS ARE IN METERS ABOVE ORDNANCE DATUM (MOD) UNLESS OTHERWISE STATED.
7. THE DART+ COASTAL NORTH PROJECT IS POSITIONED ACCORDING TO THE IRISH TRANSVERSE MERCATOR (ITM) COORDINATE SYSTEM.
8. EXISTING TROUGHING TO BE REMOVED POST CONSTRUCTION OF PROPOSED TROUGHING.
9. SELECTED INFRASTRUCTURE INTERVENTIONS DRIVING THE LINESIDE CIVILS DESIGN SUCH AS SUBSTATIONS HAVE BEEN SHOWN FOR INFORMATION ON THESE LINEAR WORKS PLANS. FOR A FULL PICTURE OF ALL INTERVENTIONS ACROSS THE PROJECT, PLEASE REFER TO THE BOOK 1 RAILWAY WORKS PLANS.
10. OHLE STRUCTURES ARE SHOWN AT INDICATIVE LOCATIONS AT A SPACING OF TYPICALLY 40m TO 50m. OHLE WIRES WILL SPAN BETWEEN THE STRUCTURES.

LEGEND

- DEVELOPMENT BOUNDARY
- EXISTING ELEMENTS
- ELEMENTS TO BE REMOVED
- PROPOSED UNDER TRACK CROSSING (UTX)
- - - - PROPOSED TROUGHING
- - - - PROPOSED ELEVATED TROUGHING
- - - - PROPOSED FENCING
- CABLE DUCTS IN PLATFORM
- PROPOSED OVERHEAD LINE EQUIPMENT
- TRACKWORK (EXISTING AND PROPOSED)
- ▨ PLATFORM MODIFICATIONS
- ⊕ PROPOSED SIGNAL
- PROPOSED LOCATION CASE



Disclaimer

© Irish Rail (2023). This drawing is confidential and the copyright in it is owned by Irish Rail. This drawing must not be either loaned, copied or otherwise reproduced in whole or in part or used for any purpose without the prior permission of Irish Rail.

© OpenStreetMap contributors

© Ordnance Survey Ireland and Government of Ireland. All O.S. data used for plans are printed under Copyright Ordnance Survey Ireland 0039723 (OSi Aerial Data or OSi Lidar Data) & 2023 OSi, NMA, 100 (OSi Vector Data). All elevations are in metres and relate to OSi Geoid Model (OSGM02). Mean Height is defined by existing Project Control. All Co-ordinates are in Irish Transverse Mercator Grid (ITM) as defined by OSi active GPS station Tallaght College (TLTG).

Rev	Date	Dm	Chk'd	App'd	Description
P01	12/04/2024	AC	EJ	DB	PLANNING ISSUE

Client

Engineering Designer

Date	Scale	Drawn	Checked	Approved
01/06/2023	As shown	AC	EJ	DB

Project Code	Originator Code	OMS Code	Sheet Number	Status	Rev
D+WP56	ARP	280275-00	13 of 58	S3	P01

Project Title

DART+ COASTAL NORTH

Drawing Title

LINEAR WORKS

Drawing File Name

D+WP56-ARP-P4-NL-DR-RO-100013

Scale: 1:500

Paper size: 1261 mm x 594mm

DO NOT SCALE USE FIGURED DIMENSIONS ONLY